

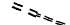





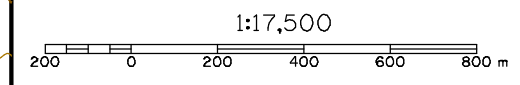
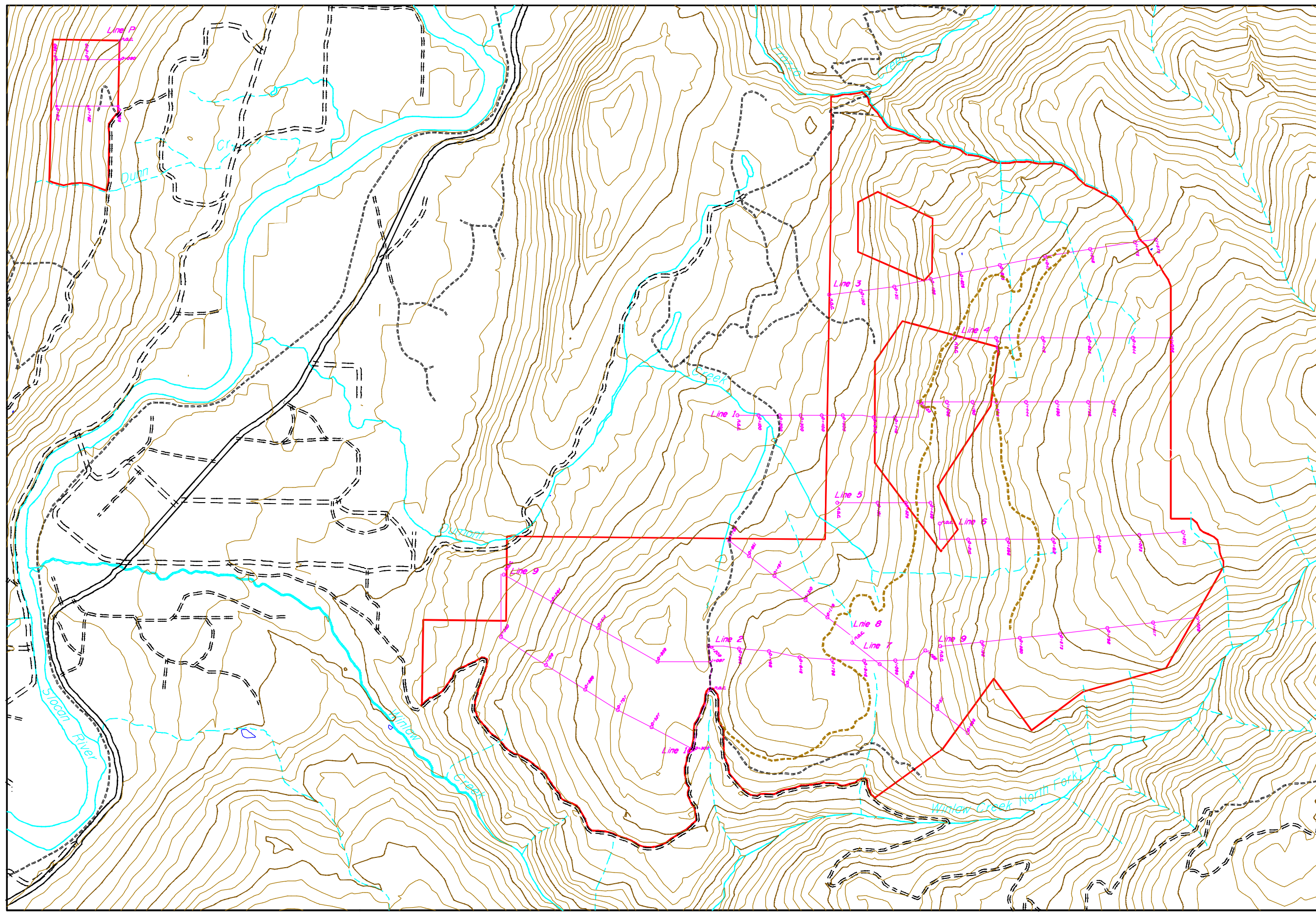


Woodlot Licence W1832

1998-99 Field Work

Legend

-  Creeks, Rivers and Lakes
-  Intermittent Creeks
-  Roads
-  Contour Lines
-  Property Lines
-  Woodlot Boundary
-  Reconnaissance Traverse Line and Station
-  Initial Road Location to reach Area of Economically Uncertain Access



1:17,500
20 m Contour Interval